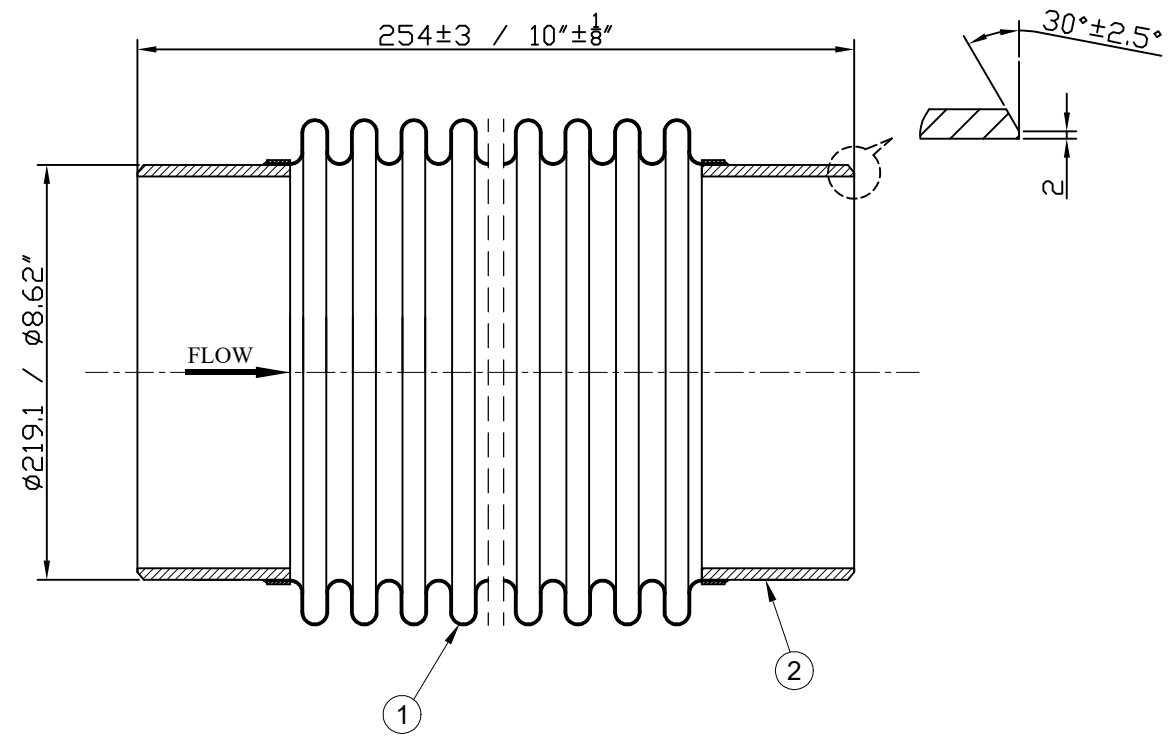
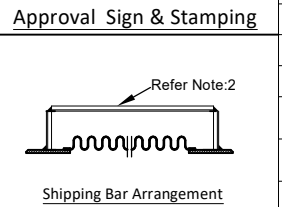


Confidential: All rights reserved ISO 16016. No part of this document may be reproduced, stored in a retrieval system, or transmitted, in any form or by any means, without prior permission. All rights reserved in the event of the granting of a patent or the registration of a utility model or design. Offenders will be held liable for the payment of damages.

*Type: Axial Expansion Joint with Butt Weld End



Design Code:	EJMA 10th Edition	
Size:(DN)	200	8"
Design Pressure :	10.34 bar(g)	150 PSI(g)
Design Temperature :	454.44°C	850°F
Test Pressure:	15.51 bar(g)	225 PSI(g)
Life Cycle:	Above 10,000	
Weight:	~ 8.1 Kg	~ 18 lbs
Movement Capacity:	(+)	(-)
	(mm) (Inch)	(mm) (Inch)
Axial Movement:	10 0.40"	10 0.40"
Lateral Movement:	2 0.08"	2 0.08"
Angular Movement:	0° 0°	0° 0°
	Spring Rate ±30%	
	291 N/mm	1661.61 lb/inch
	1173 N/mm	6698 lb/inch
	36 N-m/deg.	319 lb-inch/deg.



2	End Pipe	Sch.40	ASTM A 106 Gr.B	2
1	Bellow	0.5 mm / 0.02" x 2 Ply	A 240 Gr.304	1
Sl.No.	Description	Dimension	Material	Pcs

Bill of Material

Client Name:-

- Notes :**
- Bellow Tolerance will be as per EJMA 10th Edition.
 - Shipping bar will be provided painted in yellow, removed it after installation.
 - All surface will be smooth finish, free from welding burrs and Sharp edges.
- Testing :**
- 100% Die penetration test on weld joints where ever applicable.
 - Raw material check test for chemical composition and mechanical properties.
 - Dimension and visual check.

No	Revision Description	Date

DRAWN BY	--
CHECKED BY	--
APPROVED BY	--
SCALE: NTS	--
DRAWING No.	--
DATE	--
REV:-	00



OWNER :
 Easyflex Global Ventures.INC
 41A 5205 Glen Erin Drive Mississauga,
 ON L5MN6 Canada